

Ontario Regional Hazelnut Cultivar Trials

Barb Yates, Ferrero

Melanie Filotas, OMAFRA

Katerina Jordan, Afisa Munawar, Cathy Bakker - University of Guelph

Sharon Regan, Queens University

John Zandstra, Greg Watt, Sydney Boersma, University of Guelph

Background

- Applied for a Tier 1 project through the Ontario Agri-Food Innovation Alliance (formerly the OMAFRA-U of G Partnership) in the fall of 2019
- OMAFRA Special Initiatives funding – longer term projects

The logo is a black circle with a red border. Inside the circle, the text "Ontario Agri-Food Innovation Alliance" is written in white, stacked in four lines.

Ontario
Agri-Food
Innovation
Alliance

Background

- \$417,660 over 6 years
 - \$167,660 for research on Eastern Filbert Blight
 - \$250,000 for regional cultivar trials
- Replicated cultivar trials at 5 locations across southern Ontario

Locations



Simcoe Research Station

Simcoe Research Station



- Fox sand
- Plant Hardiness Zone 6b (-18 to -21°C)

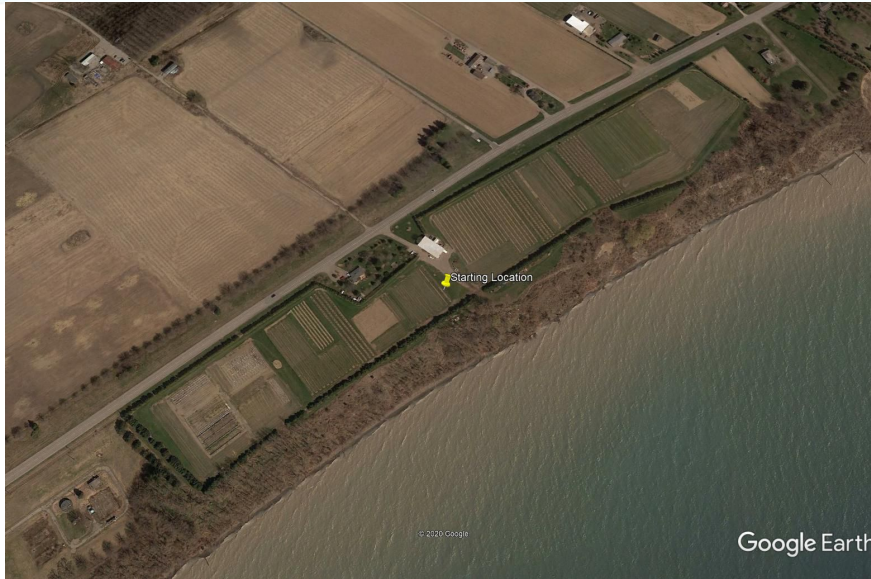
Locations



Cedar Springs Research Station

Simcoe Research Station

Cedar Springs Research Station



- Fox gravelly loam
- Plant Hardiness Zone 6b/7a (-18 to -21/-15 to -18°C)



Locations

Huron Research Station



Cedar Springs Research Station

Simcoe Research Station

Huron Research Station



- clay
- Plant Hardiness Zone
6a/6b
(-21 to -23/-18 to - 21°C)

Locations

Huron Research Station

Uxbridge area



Cedar Springs Research Station

Simcoe Research Station

Locations

Huron Research Station

Uxbridge area

Kingston area



Cedar Springs Research Station

Simcoe Research Station

Joyceville Institution



- Cooperating with Dr. Sharon Regan, Dept. of Biology, Queens University
- loam?
- Plant Hardiness Zone 6a (-21 to -23°C)

Trial Design/Data Collection

- 5 trees per plot by 4 replicates
 - 20 trees of each cultivar per location
- 3.0 m between trees; 6.0 m row width
- irrigated?
- single trunk?
- Data collection:
 - tree survival
 - tree vigor
 - bloom timing/catkin production
 - yield/quality
 - disease/insect pressure

Source of Cultivars

- Oregon State University (Mehlenbacher)
- Rutgers (Molnar)
- Grimo
- Hodgson
- Quebec ?
- Wisconsin ?

Grower Surveys

- OHA plans to provide 1 student if Canada Summer Jobs grant application is successful
- Summarize data collected to date by surveys started by Dr. Toktam Taghavi
- Many years of data over many locations; data needs to be summarized so it can be analyzed

Thank-you

