

What's New in Programs?

Margaret May
Regional Program Lead
OSCIA



Stanley & Pearlie McCutcheon

- ▶ Hickory Nuts
- ▶ Heart Nuts
- ▶ Walnuts





Growing Forward 2

A federal-provincial-territorial initiative



CANADIAN AGRICULTURAL PARTNERSHIP

Innovate. Grow. Prosper.

MORE INFO



Canadian Agricultural Partnership

- ▶ 5 year Federal/ Provincial /Territorial
- ▶ \$1.5 Billion-\$1.1 B for Business Risk Management - \$417 M for Strategic Initiatives to grow Ont Agri-Food Sectors



Canadian Agricultural Partnership

Eligibility

- ▶ File Farm Income Tax in Ontario
- ▶ Registered Farm Business or Exemption
- ▶ Premises ID

Three
Focus
Areas

Economic Development

Environmental Stewardship

Protection and Assurance

*Research and Innovation will
continue to be Key.*

CAP Key Priority Outcomes

1

Increasing
Competitiveness,
Productivity and
Profitability

2

Increasing
Environmental
Sustainability

3

Expanding Domestic
and international
markets

4

Improving
Anticipation,
Mitigation and
Response to risk

Economic Development



Market Development- Domestic and International

Productivity- Technology, Innovation and Labour Attraction

Business Analysis – Skills Development, Knowledge Transfer and Resources

Program funds will support key activities to

1

Adopt innovations,
tools, best practices &
technologies

2

Create and
commercialize
innovative products,
practices and
processes

3

Increase sector
collaboration

4

Maintain investments
and capacity

Market Development Categories



Marketing plan,
assessment or audit

New sales and marketing
activities, tools and
resources for the
domestic /export market

New product or process
development

Productivity Categories

- ▶ Labour productivity plan/assessment/audit
- ▶ Install technology and/or equipment to increase automation
- ▶ Productivity through ingredient and waste management
- ▶ Commercialization of technology/equipment to increase productivity

Business Analysis Categories

- ▶ Financial analysis or business assessment
- ▶ Business planning
- ▶ Leadership Development



Environmental Stewardship

- ▶ Water Quality
- ▶ Soil Health

Environmental Stewardship

Improving

Improving the soil health of Ontario's farmland

Reducing

Reducing nutrients loss, in particular phosphorus, from agriculture production into Ontario's Great Lakes with focus on Lake Erie

Enhancing

Enhancing pollinator habitat, reducing greenhouse gas emissions, building resilience to climate change, while strengthening sustainability

Project Categories

- ▶ **Adding Organic Amendments and Equipment**
- ▶ **Riparian Buffer Strips**
- ▶ **Cover Crops**
- ▶ **Fragile Land Retirement**
- ▶ **Runoff Control for Livestock Facilities**
- ▶ **Manure Storage Improvements**
- ▶ **Equipment Modifications to Reduce Soil Compaction**

Project Categories

- ▶ Nutrient Recovery from Wastewater/Wash water
- ▶ Planning - Soil Health and Water Quality
- ▶ Structural Erosion Control
- ▶ Tillage and Nutrient Application Equipment Modifications
- ▶ Windbreaks and Wind Strips
- ▶ Water Wells

Actions....

- ▶ Spreading solid organic amendments
- ▶ Permanent vegetated buffer strips
- ▶ Covering soil over winter to reduce erosion
- ▶ Removing fragile landscapes from production
- ▶ Equipment modifications to effectively spread manure
- ▶ Run off management from livestock facilities
- ▶ Improving manure storage practices on farms

Actions

- ▶ Modifications to greenhouse irrigation, manure dewatering, and wastewater recycling
- ▶ Nutrient Management Planning
- ▶ Erosion control structures
- ▶ Equipment modifications for no-till/ reduced tillage, fertilizer and residue management
- ▶ Establishing vegetation to reduce erosion
- ▶ Protection of existing wells from surface contamination
- ▶ Equipment modifications to reduce soil compaction



Environmental Stewardship Eligibility

A VERIFIED COMPLETE 4TH EDITION ENVIRONMENTAL FARM PLAN (EFP) OR A
PEER REVIEWED 3RD EDITION

Protection and Assurance

Food Safety

Animal Health

Plant Health

Outcomes...

- ▶ Increased public trust in Ontario's food safety brand
- ▶ Increased public trust in Ontario's farmed animal handling practices
- ▶ Improved water quality, soil and pollinator health
- ▶ Improved preparedness for climate change adaptation

Food Safety

- ▶ Prevention or reduction of food safety hazards
- ▶ Proactive - address existing and emerging risks
- ▶ Increase businesses' competitiveness, and consumer confidence

Food Safety categories

- ▶ Food Safety/ Traceability Pre-audit, Assessments and Planning
- ▶ Equipment
- ▶ Food Safety and Traceability System Improvements
- ▶ Food Safety Program Adoption
- ▶ Traceability Solutions Adoption
- ▶ Skills Development and Training

Animal Health

- ▶ Prevention, detection, and mitigation of risks
- ▶ Effectively managing antimicrobial use
- ▶ Supporting livestock and poultry producers in Ontario to be competitive, productive and profitable

Animal Health Categories

- ▶ Education, Planning, Assessment and Training
- ▶ Preventing Introduction and Spread of Disease
- ▶ Construction of Facilities to Manage Deadstock
- ▶ Improvements to Animal Housing and Handling
- ▶ Skills Development/ Training
- ▶ Traceability Equipment
- ▶ Traceability System Improvements

Plant Health

- ▶ Proactively manage Ontario's plant agriculture resource base through the implementation of positive actions by the supply chain
- ▶ Increased ability of the plant agriculture supply chain to prepare for emergencies and climate change
- ▶ Increased coordination and capacity among all plant health partners

Plant Health Categories

- ▶ Managing contaminated plant and soil
- ▶ Sanitation and work flow
- ▶ Tools and equipment for plant pest monitoring and management*
- ▶ Preventing access from wildlife, pests and rodents*
- ▶ Continuous rinse systems
- ▶ Skills Development and Training
- ▶ Plant Health Best Practices*
- ▶ Building Networks to Advance Plant Health (New)

Canadian Agricultural Partnership

- ▶ Merit based- Intakes
- ▶ Audit, assessment or plan
- ▶ Project aligns with focus
- ▶ 25%-50% cost share
- ▶ Requirements for each category



**Details-
March 29/18**

First intake.....

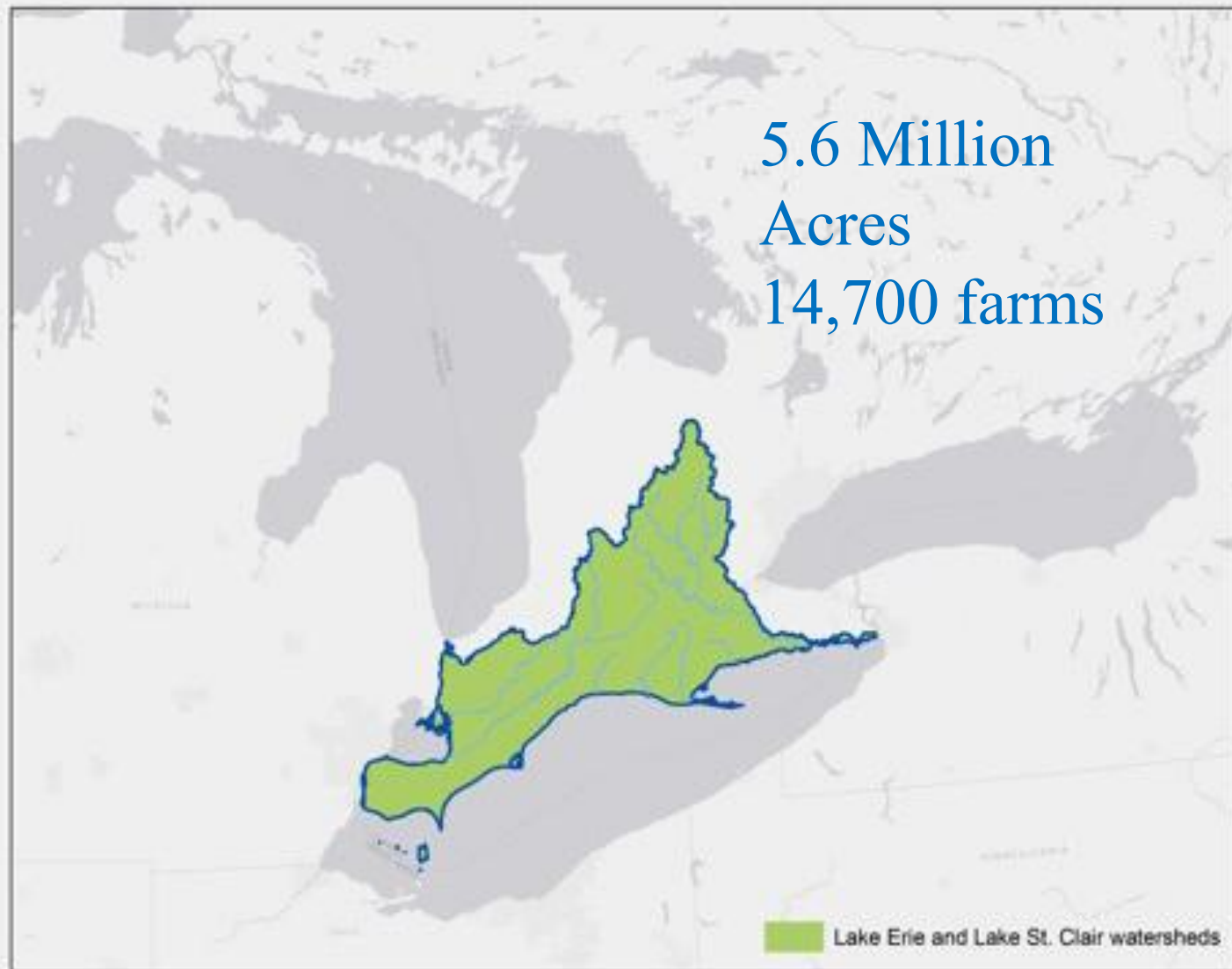
► April 3, 2018- May 8, 2018

More intakes will be announced

Lake Erie Agriculture Demonstrating Sustainability (LEADS)

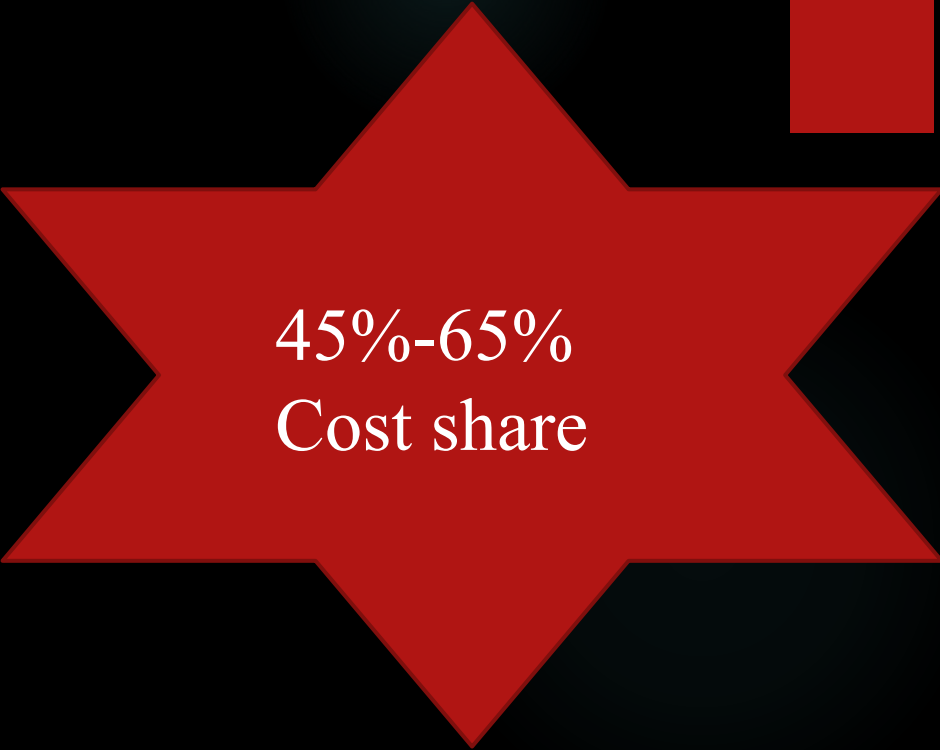
- ▶ Targetted Geography- Lake Erie and Lake St Clair
- ▶ Farmland Health Checkup with CCA
- ▶ EFP
- ▶ Intake opens April 3 until fully subscribed

5.6 Million
Acres
14,700 farms



Project Categories

- ▶ Adding organic amendments
- ▶ Riparian Buffer strips
- ▶ Cover Crops
- ▶ Fragile Land Retirement
- ▶ Equipment to Apply Manure
- ▶ Equipment to reduce Soil Compaction
- ▶ Crop Nutrient Plans
- ▶ Structural Erosion Control
- ▶ Tillage and Nutrient Application Equipment Modifications
- ▶ Windbreaks and Windstrips



45%-65%
Cost share

Farmland Health Check Up




GLASI

Great Lakes Agricultural
Stewardship Initiative

**Farmland Health
Check-Up**

Farmer Name: _____



April 3, 2018



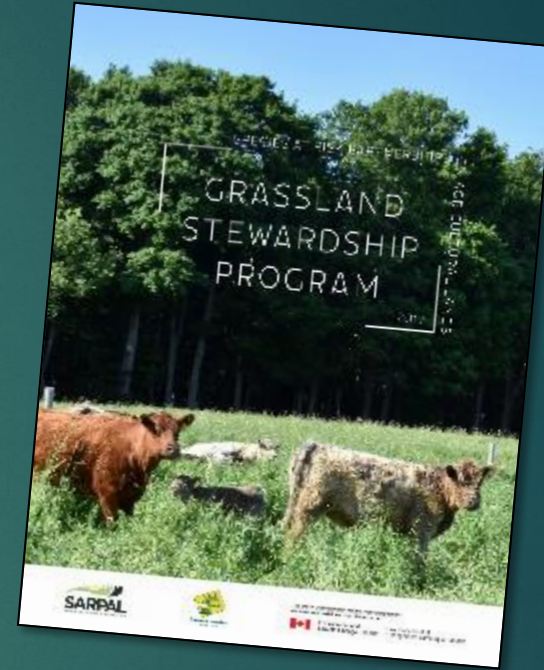
- 
- ▶ Environmental Farm Plan
 - ▶ Growing your Farm Profits
 - ▶ Biosecurity workshop- *Dairy, Beef, Sheep, Swine, Goats, Bees, Field Crops, Greenhouse, Mink, Poultry*

Grassland Stewardship Program

Funding for Best Management Practices to improve grassland habitat and support bobolink and other grassland birds

Supported BMPs

1. Control of encroaching trees and shrubs through mowing
2. Incorporating delayed grazing into rotational grazing systems
3. Grassland restoration
4. Delayed haying





Important Dates for 2018

Intake 2: April 9 to May
1, 2018

**Completion and Claim
Deadline:** Dec 15, 2018



BADGERWAY

Supporting the American badger by creating and connecting badger habitat

1. Establishment of perennial contour cropping or other in-field perennial grass strips
2. Tree and shrub planting
3. Grassland restoration



Program Details

Up to 75% of project costs, to a maximum of \$20,000 per farm business

Participating farm businesses must sign a 5-year Conservation Agreement with Environment Canada

Projects completed between Jan 1, 2018 and Feb 1, 2019



Opportunity, Programs, Paperwork



Keep in
touch....

Margaret May

226-973-3548

mmay@ontariosoilcrop.org

@may_margaret

